

Case study

Wall Thermometer Integration: Widget in Video Screen with Temperature Data of Incomming Employees

Mission

We developed a simple integration to **visualize measurements of human body temperature** by plugging a **wall thermometer** into a **Raspberry Pi** and connecting it to an **AXIS camera** via network.

The thermometer takes **people's temperature** and the results are **displayed on a screen** as a simple **infographic** using [CamOverlay App](#). The micro app can also **send event data** to a video management system or other systems via **HTTP push or MQTT**, so you can **search quickly through recorded footage** or **send notifications to responsible personnel**.

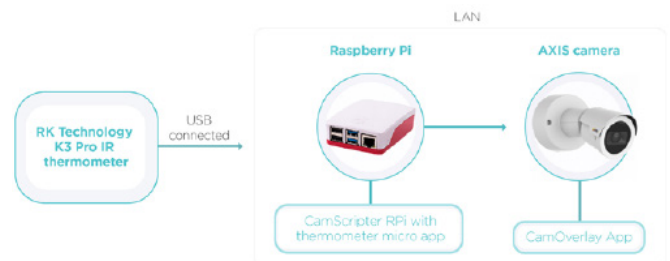
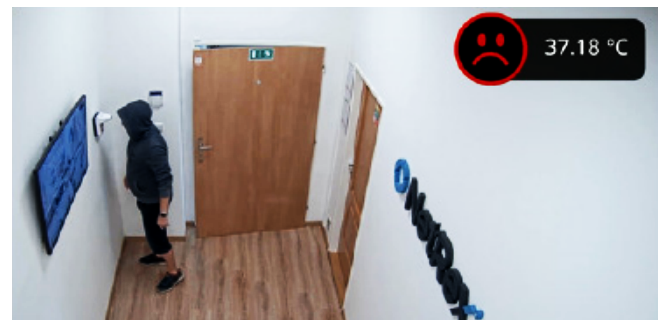
This integration is a cost and time-effective **virus/disease prevention measure** in office buildings, shops, and other public spaces.

Solution

The core of this integration is CamScripter RPi and an [RK Technology K3 Pro IR thermometer](#). The thermometer is **plugged directly** into a **Raspberry Pi**, **CamScripter RPi** forwards the data into an AXIS camera and the **measurements are displayed** via [CamOverlay App](#) graphics.

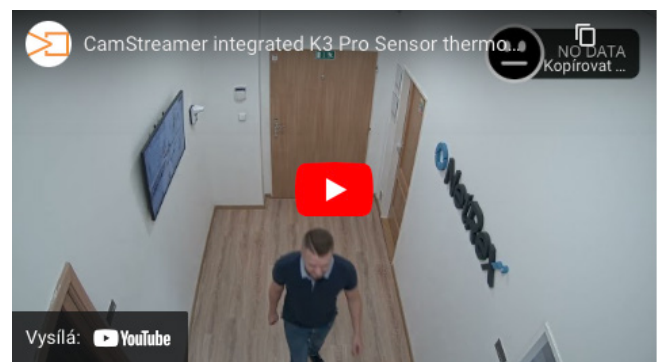
List of Supplies

Hardware:	AXIS camera
	RK Technology K3 Pro IR thermometer
	Raspberry Pi
Software:	CamOverlay App
	CamScripter RPi
	K3 Pro Sensor micro app



Tip

Learn more about **CamScripter RPi** in [linked product sheet](#) where we explain how to **set up a Raspberry Pi** to work with our app and how to prepare CamScripter RPi to work with **micro apps of your choice**.

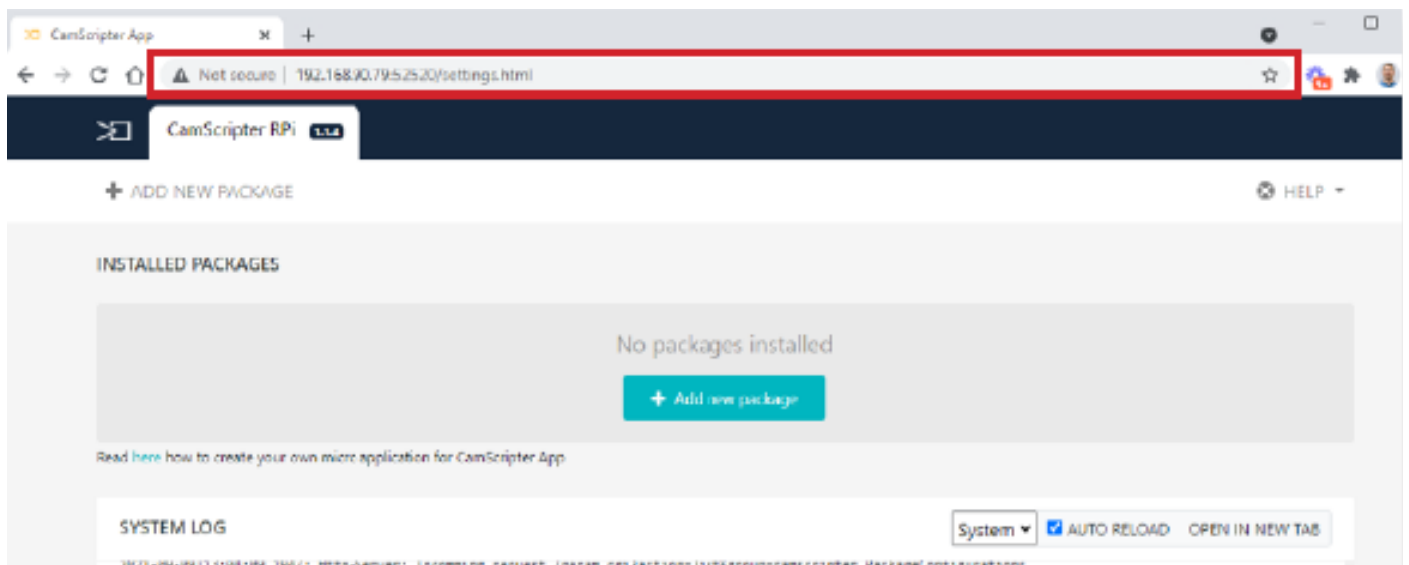


Case study

Wall Thermometer Integration: Widget in Video Screen with Temperature Data of Incomming Employees

Setup guide

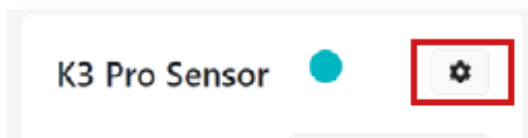
Open your internet browser and type in **the IP address** of your **Raspberry Pi** to open **CamScripter App UI**. The IP address must be in **the following format**: <http://localhost:52520/settings.html>



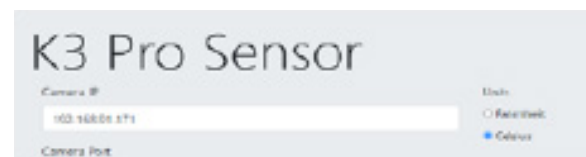
Upload the [K3 Pro Sensor package](#).

Click **“Start”** to launch the micro application.

To **set the thermometer up**, open **CamScripter App UI** in your browser, and access the **K3 Pro Sensor** via the **gear button** next to the installed **thermometer package**.



Here you can select temperature limit, choose between Fahrenheit and Celsius temperature scales, and specify widget position.



And that's it.

Result

Our thermometer integration is a great solution for **efficient health monitoring** in shops, office buildings, and factories. It's **fast, convenient, and utilizes** a thermometer model available all around the world.

camstreamer.com/resources/Wall-thermometer-integration

