

Store Occupancy Manager

Technical guide for system integrators

New Store Occupancy Manager ACAP application

Store Occupancy Manager is a new ACAP application for ARTPEC-5/6/7 AXIS IP cameras that enables retailers to **track, count, and limit the number of people inside the store**. It runs directly **onboard the cameras** and is **extremely easy to install, setup, and integrate with other systems**.

How does Store Occupancy Manager work?

The application **aggregates data on the number of people in the store** (from an AXIS camera with AXIS Occupancy Estimator or AXIS People Counter installed or from XOVIS counters) and **displays it to incoming customers – together with a live shot from inside the store – on a big-screen TV**.

If the **maximum capacity of the store is reached**, the application **asks others to wait and not enter the store**. In the meantime, the app **displays marketing messages**. The graphics can be easily personalized and can display information, banners, images, and even animated GIFs.



Watch video



What do you need for this solution?

- ☒ **Occupancy counter** – an AXIS camera with AXIS Occupancy Estimator or AXIS People Counter ACAP app on-board or from XOVIS counters
- ☒ An AXIS camera with **Store Occupancy Manager ACAP app** from CamStreamer on-board
- ☒ A **big-screen TV** with HDMI input **as a public-view monitor** at the store entrance

Store Occupancy Manager is the right solution for the following tasks:



Limiting store occupancy

A large TV screen next to the store entrance showing **overlay graphics and animation** based on the **number of customers inside the store**. When the limit has been reached, the **screen shows the STOP sign**, different overlay graphics, and or animation so people know they have to wait.



Preventing shoplifting

The source of the video for the TV screen is an **overview camera that monitors the store**. This **public-view monitor** prevents shoplifting by letting customers know the **store is being monitored**.



Showing marketing promos

The big-screen TV can show **other overlay graphics** (up to four at the same time), such as **animation with a logo, text info ticker, simple video, or a promo banner to attract customers** to the store. The overlay graphics can also be **automatically displayed per set conditions, scheduled and remotely managed via API**.



Triggering other actions

Store Occupancy Manager can also **trigger other actions** to meet different process requirements. It can, for example, **switch indication LEDs on and off, play audio messages** on connected speakers, **control automatic doors**, **remotely notify a security officer** of excess occupancy, or **send notifications to external systems** over the network.

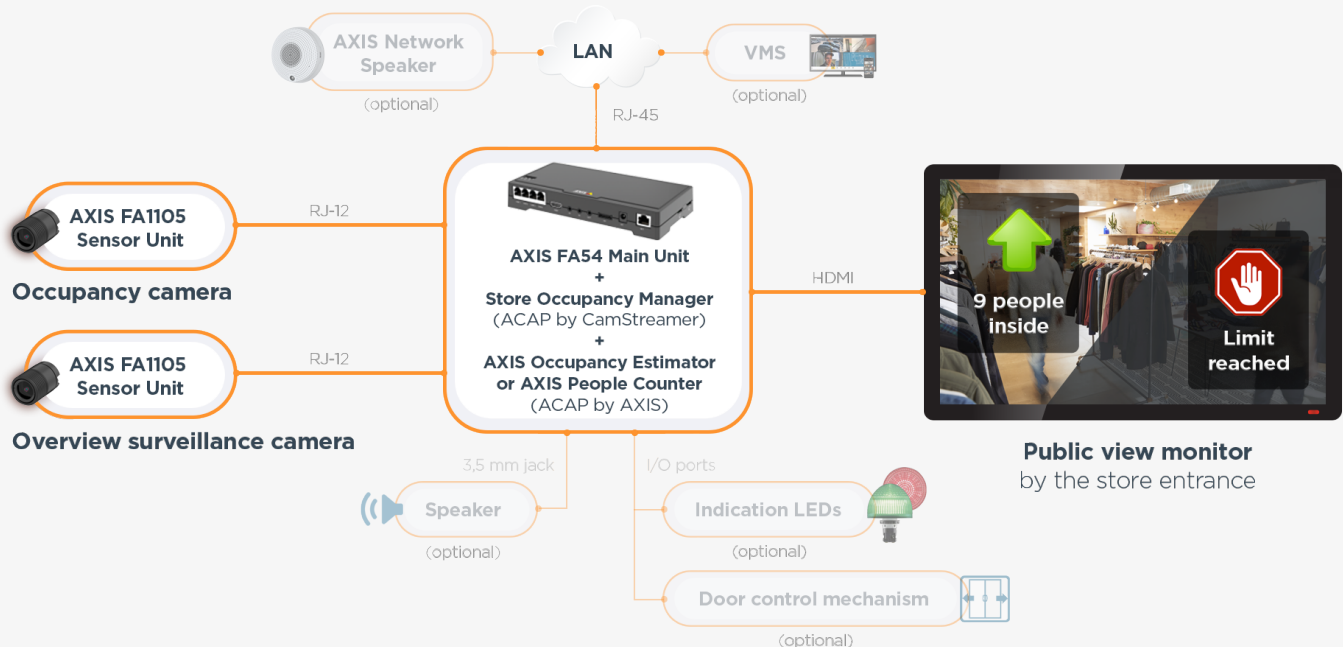
Store Occupancy Manager

Technical guide for system integrators

I. Hardware selection and integration scenarios

- The **Store Occupancy Manager** ACAP app determines the number of customers in the store by gathering **occupancy data**. It then **inserts overlay graphics into the video being streamed** to the big-screen TV, including store occupancy and either a **green or red alert sign** to let people know they can enter or need to wait. With certain cameras (**AXIS FA54 Main unit**), **video can be sent directly to the big-screen TV via the camera's HDMI output**, thus eliminating the need for **additional HW**. Video with overlay graphics generated by many other compatible cameras (see below) can also be displayed on the TV screen by means of the tiny **AXIS T8705 Video Decoder**. The multiple configuration options make it easy to find the right fit for your particular case.
- One of the most important aspects is **occupancy data**, which is provided by the **AXIS Occupancy Estimator** ACAP app running on cameras located at the store entrances. AXIS Occupancy Estimator can run on one or more supported cameras, with one camera serving as the master and the others as slaves. **Store Occupancy Manager communicates with the master only**. AXIS Occupancy Estimator **can run on a dedicated camera** (e.g. **AXIS M3064-V**), or it can even run on the same camera as Store Occupancy Manager, which keeps the **setup very minimalistic**. We'll describe these scenarios in greater detail below. **Data can be gathered from camera with AXIS People Counter ACAP as well**. Store Occupancy Manager can work with up to four cameras with **AXIS People Counter on-board**. Data can be gathered from XOVIS counters as well.
- The **output of Store Occupancy Manager is a video with overlay graphics**, the **source of which is typically an overview camera**. Because the video with occupancy information is **displayed on a public-view monitor**, it also serves to prevent shoplifting.
- Let's look at **some common connection scenarios**...

Scenario 1: minimalistic design, everything works on a single AXIS FA54 camera with two sensor units

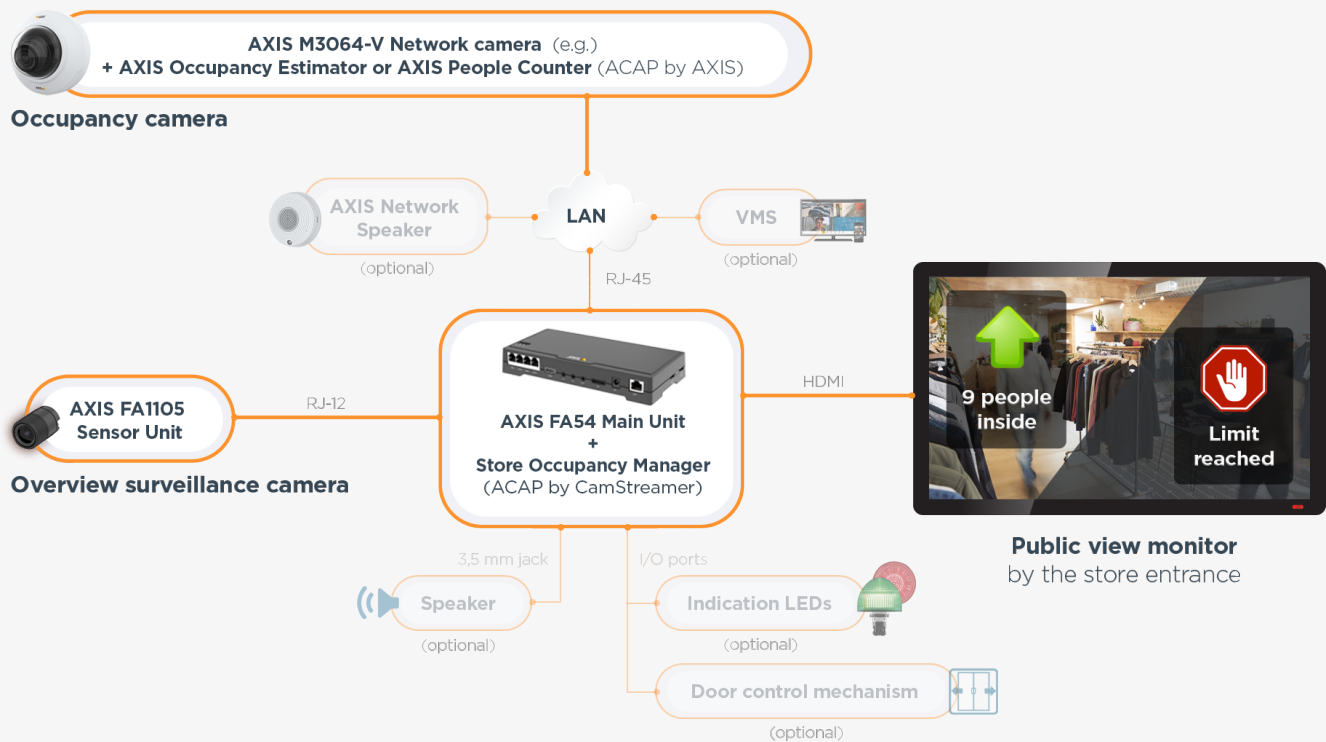


- This setup is based on an **AXIS FA54 Main Unit** with the **AXIS Occupancy Estimator** ACAP app (or **AXIS People Counter**) and the **Store Occupancy Manager** ACAP app on board.
- Two camera sensor units (AXIS FA1105 Sensor Unit)** are connected to the AXIS FA54 Main Unit; **the first one is used as an occupancy camera, the second as an overview surveillance camera**. The second camera provides the video stream for the occupancy graphics to be displayed on a public-view monitor.
- The AXIS FA54 Main Unit has an **HDMI output port with graphics overlay support**, so it can be connected **directly to a big-screen TV** to provide a **public-view monitor**.
- The AXIS FA54 Main Unit is a powerful device with many interfaces. Besides its HDMI output, it has **line audio input and output ports** and **four configurable binary I/O ports**, which means an **analogue speaker, LED indicators, or door control mechanisms** can be connected directly to the main unit. The logic for activating these devices is **set in AXIS Events**, as is the logic for controlling external network speakers and or I/O devices.
- MSRP prices:** AXIS FA54 Main Unit (Product Number US: 0878-004) \$449.00 + 2x AXIS FA1105 Sensor Unit (Product Number US: 0913-001) \$139.00 + AXIS Occupancy Estimator E-license (Product Number US: 01147-051) \$429.00 + Store Occupancy Estimator E-license (Product Number: 505-001) \$499.00 = **Total MSRP costs for this scenario** (excl. installation, public-view monitor, cables, and network parts): **\$1,655.00**

Store Occupancy Manager

Technical guide for system integrators

Scenario 2: dedicated camera(s) for AXIS Occupancy Estimator (or AXIS People Counter) and an AXIS FA54 Main Unit for Store Occupancy Manager

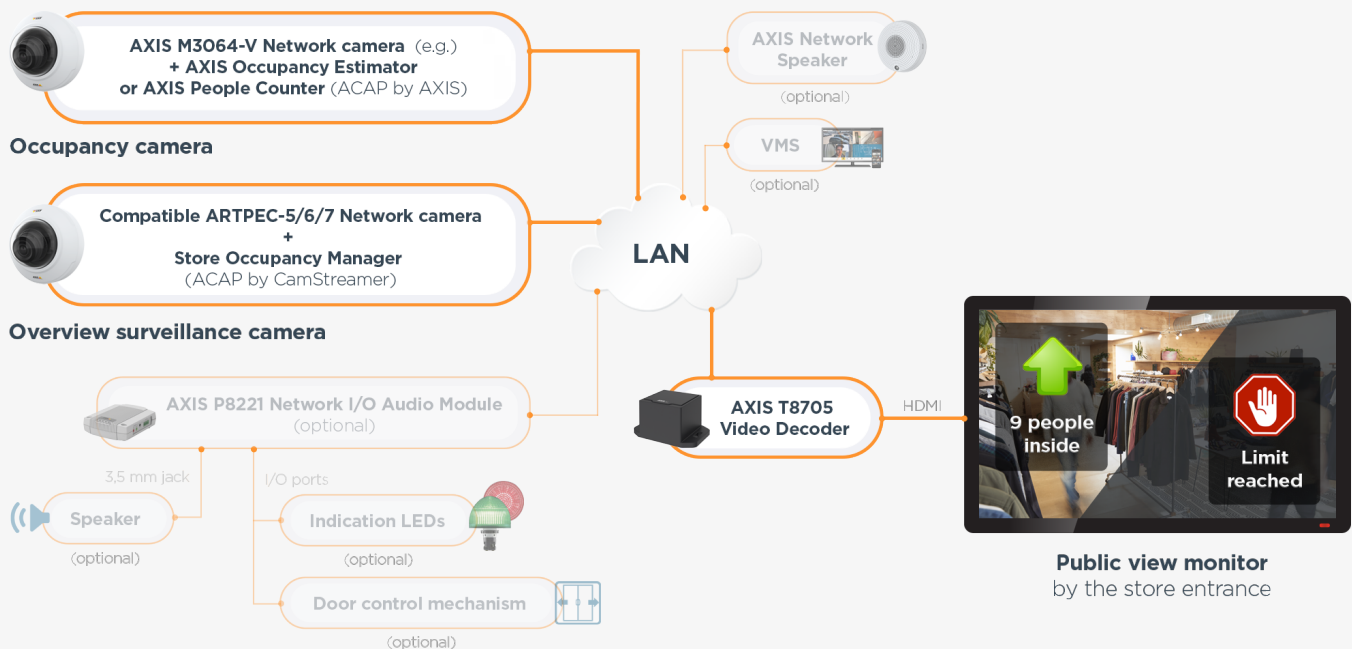


- This setup is based on a **dedicated occupancy camera** (e.g. [AXIS M3064-V](#)) with the [AXIS Occupancy Estimator](#) ACAP app (or [AXIS People Counter](#)) on board and an [AXIS FA54 Main Unit](#) with the [Store Occupancy Manager](#) ACAP app onboard. All the cameras must be on the same LAN.
- Any **AXIS Occupancy Estimator-compatible AXIS network camera** can be used in this scenario as a **source of occupancy data**. A list of compatible models can be found in Chapter 4 of this document, or at www.axis.com.
- The AXIS FA54 Main Unit has an **HDMI output port with graphics overlay support**, so it can be connected **directly to a big-screen TV** to provide a **public-view monitor**.
- The AXIS FA54 Main Unit is a powerful device with many interfaces. Besides its HDMI output, it has **line audio input and output ports** and four **configurable binary I/O ports**, which means an **analogue speaker**, **LED indicators**, or **door control mechanisms** can be connected directly to the main unit. The logic for activating these devices is **set in AXIS Events**, as is the logic for controlling external network speakers and or I/O devices.
- MSRP prices:** AXIS M3064-V network camera (Product Number US: 01716-001) \$199.00 + AXIS Occupancy Estimator E-license (Product Number US: 01147-051) \$429.00 + AXIS FA54 Main Unit (Product Number US: 0878-004) \$449.00 + 1x AXIS FA1105 Sensor Unit (Product Number US: 0913-001) \$139.00 + Store Occupancy Estimator E-license (Product Number: 505-001) \$499.00 = **Total MSRP costs for this scenario** (excl. installation, public-view monitor, cables, and network parts): **\$1,715.00**

Store Occupancy Manager

Technical guide for system integrators

Scenario 3: dedicated camera(s) for AXIS Occupancy Estimator (or AXIS People Counter) and a compatible AXIS ARTPEC-5/6/7 camera for Store Occupancy Manager



- This setup is based on:
 - An AXIS IP camera with the [AXIS Occupancy Estimator](#) ACAP app (or [AXIS People Counter](#)) on board as an **occupancy camera** (e.g. the [AXIS M3064-V](#) in the diagram).
 - A compatible ARTPEC-5/6/7 AXIS network camera with the [Store Occupancy Manager](#) ACAP app on board as an **overview surveillance camera** (see the compatibility list below).
 - [AXIS T8705 Video Decoder](#) as a network RTSP video converter to HDMI output.
 - All devices must be on the same LAN network.
- Any compatible AXIS network camera** can be used as an **occupancy camera** with the AXIS Occupancy Estimator ACAP app on board. A list of compatible models can be found in Chapter 4 of this document, or at www.axis.com.
- Any compatible AXIS network camera with an ARTPEC-5/6/7 processor inside** can be used as an **overview surveillance camera** with the Store Occupancy Manager app on board. A list of compatible cameras can be found in Chapter 4 of this document, or at www.camstreamer.com.
- An **RTSP video stream** from an overview camera **with added occupancy graphics overlay** can be pulled by the [AXIS T8705 Video Decoder](#) **over the local network**, sent to the **HDMI output**, and **displayed on a TV screen (public-view monitor)**.
- If you wish to **trigger various actions based on occupancy data**, you can do so with the **AXIS Events Engine** inside the camera, using the "Store Occupancy Manager - No Entry" event as a trigger. This, for instance, lets you **play audio messages** on an [AXIS C1410 Network Speaker](#) (MSRP \$299.00) or **activate different devices (indication LEDs, door control mechanisms, etc.)** via an [AXIS P8221 Network I/O Audio Module](#) (MSRP \$359.00) and its eight configurable I/O ports.
- MSRP prices:** 2 AXIS M3064-V network cameras (Product Number US: 01716-001) \$199.00 + AXIS Occupancy Estimator E-license (Product Number US: 01147-051) \$429.00 + Store Occupancy Estimator E-license (Product Number: 505-001) \$499.00 + AXIS T8705 Video Decoder (Product Number US: 01186-004) \$299.00 = **Total MSRP costs for this scenario** (excl. installation, public-view monitor, cables, and network parts): **\$1,625.00**

Store Occupancy Manager

Technical guide for system integrators

II. Graphics overlays

- One of the key features of the Store Occupancy Manager app is its ability to **display triggered graphics overlays in the video** stream directly **using camera hardware**.
- In addition to occupancy limit control, it's possible to show other overlay graphics at the same time (logos, ads, etc.). On ARTPEC-5 cameras, there's a limit of two concurrent graphics overlays, and up to four **on the ARTPEC-6/7 cameras**.
- IMPORTANT:** If you use one camera with one sensor both for **Axis Occupancy Estimator** (or Axis People Counter) and **Store Occupancy Manager**, you have to work with two **View Areas**. **View Area 1** will be used just for counter analytics and the graphics will be placed to **View Area 2**. When the graphics are in View Area 1 it hides part of the picture which is used for counter analytics. **RTSP link** for the video with the graphics is: <rtsp://root:password@IPaddress/axis-media/media.amp?camera=2>

Graphics insert options provided by the Store Occupancy Manager app:

Occupancy widget

- Basic functionality of the Store Occupancy Manager – graphics widget **showing GO/STOP signs and occupancy limits**.
- Shows data from AXIS Occupancy Estimator **plus store occupancy limit set** in Store Occupancy Manager (number of customers allowed for the particular store).
- Once the limit is reached, the widget **automatically switches the GO sign to a STOP sign**.
- In Store Occupancy Manager, you can **set the occupancy limit, widget size, and offset X, Y** (i.e. how many pixels from the edges the graphics will be positioned).
- The widget can be **enabled or disabled**, meaning you don't have to use it if you don't want to.
- Widget can run in the **full-screen version** as well.

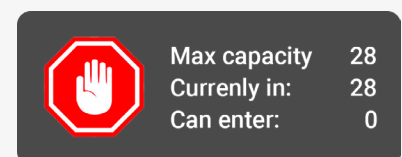
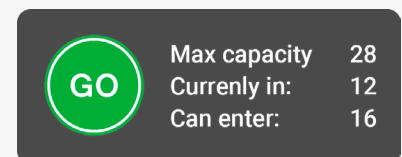
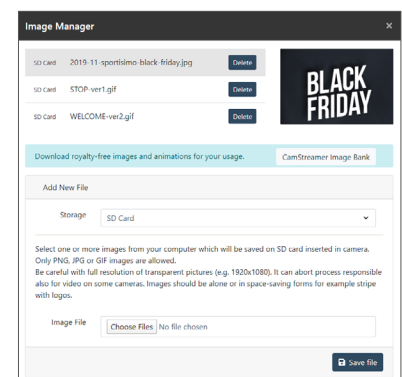


Image overlays

- Image overlays can be **images of any size with transparency support**.
- You can use a **static image, such as a logo or promo offer**, and set the size and position in the video stream.
- Supported formats: **JPG, PNG (with transparency), static GIF, animated GIF**
- Images are managed in the **Image Manager** (part of the Store Occupancy Manager app), which is where you upload images or link them to an external URL.
- Images can be located/stored:**
 - in the **camera's internal flash memory** (please keep in mind that each camera model has a different flash memory size, and you need to check the available space in app's Image Manager prior to uploading);
 - at a **remote location**, such as a local network or network URL; by pulling images from a remote location, image updates become much more flexible. Storing images in a marketing shared drive, for instance, lets you update them on the fly. You can also synchronize images with your digital signage system..
 - on an **SD card** in the camera (**highly recommended**);
- Trigger options** – each graphics overlay can be displayed based on the following triggers:
 - the number of people inside the store is lower than the set occupancy limit** – you can display a **large GO graphic** and an **animated woman prompting customers to enter the store**;
 - the number of people inside the store is the same or higher as the set occupancy limit** – you can display a **large STOP graphic** and an **animated man asking customers to wait**;
 - display always** – you can show selected images and animations no matter what the occupancy is (great for logos, banners, and various promotions).



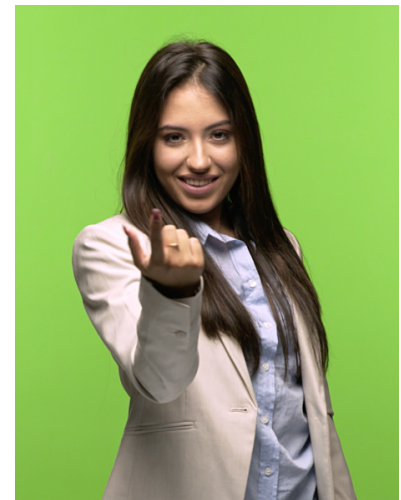
Store Occupancy Manager

Technical guide for system integrators

- **Controlled via API** – all image inserts can be controlled via API commands over the network, giving you multiple integration possibilities.
- **Time scheduling** – you can show one set of graphics overlays to be displayed during business hours (occupancy graphics, animations, banners) and another set outside of business hours (e.g. “We’re closed now. Please come back tomorrow.”).

Animated GIFs

- Support of animated GIFs offers a **wide range of possibilities**.
- Occupancy limits can be presented to customers in an **interesting, attractive way using realistic video animations** that **catch the attention of passers-by** and increase interest in the store.
- You can use an **animated GIF** (there are thousands of **GIF stickers** online). Just be careful with copyrights – in order to use animations, you need to have the permission of the author or the website you find them on.
- **We’ve prepared a few preset animations (and some static images) for you to use. You can find them in the [CamStreamer Image Bank](#).**
- **How to create your own overlay animated GIF from video?**
 - You need to shoot the video with **chroma-key** (green background), which allows video software to remove the background and make the video transparent. This can be done using almost any video editing software, such as iMovie, Filmora, Adobe Premiere, etc.
 - You can also find a lot of existing chroma key animations in video data banks like [Shutterstock](#), etc.
 - You need to convert your transparent video into an animated GIF – some video programs can do this directly, or you can use the free online tool [EZGIF.com](#), with which you can convert, edit, and optimize animated GIFs.
 - **Note: the final animated GIF must not be a big file – ideally, the animation will not be longer than five seconds with a maximum of ten frames per second and a file size of less than 2 MB. Resolution should be no more than 1/3 to 1/2 of full screen. Bigger animations can encounter difficulty with camera processing power**



Check our
CamStreamer Image Bank
and use some prepared
animations or images



Info ticker widget

- You can add a **useful info ticker widget** to the video as well.
- With this widget, you can communicate directly via your **public-view monitor**. This is ideal for promo events, displaying information about your store, etc.
- The widget can be displayed **with or without a clock**, and you can select the **size and color of the text and background**.
- Text can be **static**, or it can have a **crawl effect** (on ARTPEC-6/7 cameras).
- The source of text can be **managed locally or remotely via an API**, or it can be a **TXT file stored on a network shared drive or URL**.



III. AXIS Events engine

- Store Occupancy Manager **generates events directly** to the standardized **AXIS Events Engine**.
- This means you can take advantage of the **sophisticated triggering logic** that **AXIS uses on its network cameras**.
- It can, for example, **switch LED indicators on and off**, **play audio messages on connected speakers**, **remotely notify a security officer of excess occupancy**, or **send notifications to external systems over the network**.
- All devices can be connected to the camera using **configurable I/O ports**, which are then managed in the Events Engine. You can also manage devices in different parts of the store, such as LEDs at multiple entrances and much more.
- **Store Occupancy Manager communicates with the AXIS Events engine only**. AXIS Events Engine then controls all other devices directly.



Store Occupancy Manager

Technical guide for system integrators

IV. Compatibility

List of camera models compatible with the **Store Occupancy Manager** ACAP app:

ARTPEC-6/7 cameras

(support up to 4 overlay graphics, fully compatible)

AXIS A8207-VE	AXIS M3116-LVE	AXIS P3228-LV	AXIS Q1647	AXIS Q3527-LVE
AXIS A8207-VE Mk II	AXIS M7104	AXIS P3228-LVE	AXIS Q1647-LE	AXIS Q6074
AXIS FA54 Main Unit	AXIS P1375	AXIS P3245-LV	AXIS Q1659	AXIS Q6074-E
AXIS M1134	AXIS P1375-E	AXIS P3245-LVE	AXIS Q1700-LE	AXIS Q6075
AXIS M1135	AXIS P1377	AXIS P3245-V	AXIS Q1785-LE	AXIS Q6075-E
AXIS M1135-E	AXIS P1377-LE	AXIS P3245-VE	AXIS Q1786-LE	AXIS Q6215-LE
AXIS M1137	AXIS P1378	AXIS P3717-PLE	AXIS Q1798-LE	
AXIS M1137-E	AXIS P1378-LE	AXIS P3807-PVE	AXIS Q3515-LV	
AXIS M3057-PLVE	AXIS P1445-LE	AXIS P5654-E	AXIS Q3515-LVE	
AXIS M3058-PLVE	AXIS P1447-LE	AXIS P5655-E	AXIS Q3517-LV	
AXIS M3067-P	AXIS P1448-LE	AXIS P7304	AXIS Q3517-LVE	
AXIS M3068-P	AXIS P3227-LV	AXIS Q1645	AXIS Q3517-SLVE	
AXIS M3115-LVE	AXIS P3227-LVE	AXIS Q1645-LE	AXIS Q3518-LVE	

ARTPEC-5 cameras

(support up to 2 overlay graphics, do not support animated GIFs)

AXIS M2025-LE	AXIS P1290-E	AXIS Q1942-E
AXIS M3104-L	AXIS P1435-LE	AXIS Q1942-E PT
AXIS M3104-LVE	AXIS P3374-LV	AXIS Q3615-VE
AXIS M3105-L	AXIS P3374-V	AXIS Q3617-VE
AXIS M3105-LVE	AXIS P3375-LV	AXIS Q6055-C
AXIS M5525-E	AXIS P3375-LVE	AXIS Q6154-E
AXIS P1244	AXIS P3375-V	AXIS Q6155-E
AXIS P1245	AXIS P3375-VE	AXIS Q8741-E
AXIS P1254	AXIS P5624-E Mk II	AXIS Q8741-LE
AXIS P1264	AXIS Q1615 Mk II	AXIS Q8742-E
AXIS P1265	AXIS Q1615-E Mk II	AXIS Q8742-LE
AXIS P1275	AXIS Q1941-E	AXIS V5914
AXIS P1280-E	AXIS Q1941-E PT	AXIS V5915

The current list of compatible cameras is available on the [CamStreamer website](#).

List of camera models compatible with the **AXIS Occupancy Estimator** ACAP app:

AXIS FA54 Main Unit	AXIS M3044-V	AXIS M3047-P	AXIS M3067-P	AXIS M3105-LVE	AXIS M4206-LV	AXIS P3245-VE
AXIS F41 Main Unit	AXIS M3044-WV	AXIS M3057-PLVE	AXIS M3068-P	AXIS M3106-L Mk II	AXIS M4206-V	
AXIS P1244	AXIS M3045-V	AXIS M3064-V	AXIS M3104-L	AXIS M3106-LVE Mk II	AXIS P3245-LV	
AXIS M3015	AXIS M3045-WV	AXIS M3065-V	AXIS M3104-LVE	AXIS M3205-LVE	AXIS P3245-LVE	
AXIS M3016	AXIS M3046-V	AXIS M3066-V	AXIS M3105-L	AXIS M3206-LVE	AXIS P3245-V	

This is the official compatibility list from the [AXIS website](#). Bolded are compatible with both ACAP applications - Store Occupancy Manager and AXIS Occupancy Estimator.

V. HDMI / video output

- Video output from the camera with graphics overlays is connected **via the AXIS FA54 camera's HDMI port directly to the big-screen TV**, so there's no need an additional computer.
- If you're not using an AXIS FA54 camera** (scenarios 2 and 3 from Chapter 2), then it's necessary to have another video output device - the [AXIS T8705 Video Decoder](#).
- In this setup, the overview camera with added graphics overlays sends an RTSP video stream over the network to the AXIS T8705 Video Decoder, which **converts it to its HDMI output**.
- You can use multiple AXIS T8705 Video Decoders and display the occupancy video on more TV screens as needed.**
- Important - there are other AXIS camera models with HDMI outputs, but they don't support overlay graphics (e.g. the AXIS M3065-V camera)!**
- Please note that the AXIS FA54 Main Unit is limited by the current firmware 9.80.1 in the graphics overlay color space - you can have correct colors either on its HDMI output or in the RTSP video stream, but not both. To make this work correctly on the HDMI output, please change the rotation of the HDMI output image to 180° in System -> HDMI.**



VI. API

- Store Occupancy Manager **can also be controlled via its application interface (API) commands**, which means you can **configure it remotely** or **feed it with graphics and texts from your network shared drive**, all in a matter of seconds.
- Obtaining SOM configuration:**
`http://user:password@IPaddress/axis-cgi/param.cgi?action=list&group=storeoccupancymanager.Configuration`
- Changing SOM configuration:**
`http://user:password@IPaddress/axis-cgi/param.cgi?action=update&storeoccupancymanager.Configuration=URL_ENCODED_CONFIGURATION`

Store Occupancy Manager

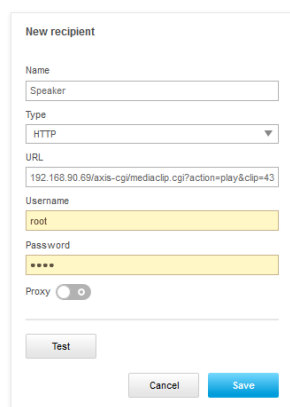
Technical guide for system integrators

VII. Two-level triggering

- With Store Occupancy Manager and AXIS Events, you can also **use two-level triggering**. This means you can set one limit for a graphics insert (e.g. 20) and another limit for generating the „SOM Occupancy Estimator - No Entry“ event to be used in AXIS Events (e.g. 25). With this event, you can trigger playback of an audio clip on a network speaker or switch indication lights on and off.
- This is how you play an audio clip via the [AXIS C1410 Network Mini Speaker](#) :**
API request to list available clips: <http://user:password@IPaddress/axis-cgi/param.cgi?action=list&group=MediaClip>
API request to play a particular clip: <http://user:password@IPaddress/axis-cgi/mediaclip.cgi?action=play&clip=43>

Setup of recipient on an SOM AXIS Camera:

Rules Schedules **Recipients** Manual triggers



New recipient

Name:

Speaker:

Type:

URL:

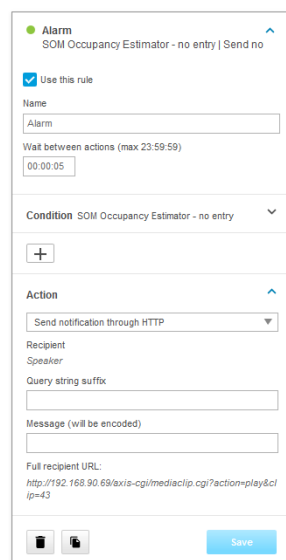
Username:

Password:

Proxy: ☐

Test

This is how you set up an audio clip playback every five seconds based on an SOM event:



Alarm
SOM Occupancy Estimator - no entry | Send no

☒ Use this rule

Name:

Wait between actions (max 23:59:59):

Condition: SOM Occupancy Estimator - no entry

Action:

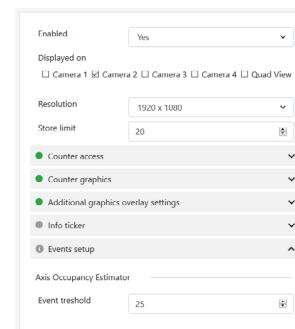
Recipient:

Query string suffix:

Message (will be encoded):

Full recipient URL: <http://192.168.90.69/axis-cgi/mediaclip.cgi?action=play&clip=43>

Event threshold setup in Store Occupancy Manager:



Enabled: ☒

Displayed on: ☐ Camera 1 ☐ Camera 2 ☐ Camera 3 ☐ Camera 4 ☐ Quad View

Resolution:

Store limit:

Counter access: ☒

Counter graphics: ☒

Additional graphics overlay settings: ☒

Info ticker: ☒

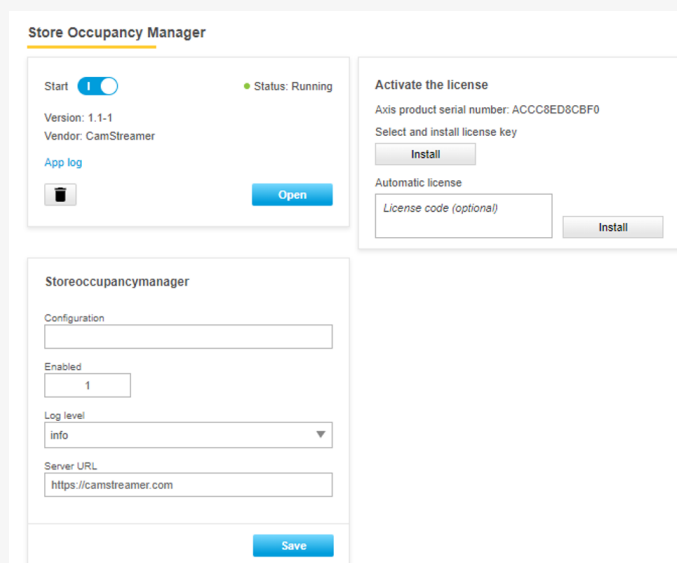
Events setup: ☒

Axis Occupancy Estimator:

Event threshold:

VIII. Store Occupancy Manager Licensing

- To **obtain a 30-day trial license or buy a full license key**, just follow these steps:
 - Visit** [Axis.com](#) > Products & solutions > Analytics & other applications > **License key registration**.
 - Enter the serial number** of your camera.
 - Choose:** I'd like to create a trial or a free license.
 - Choose** our application and press generate.
 - Download the **license key**.
 - Download our app** from <https://camstreamer.com/download-app>.
 - Install the app** in the **App** section on **AXIS** camera.
 - Import the application and the license key** in the **AXIS** user interface by clicking the **"Install"** button.



Store Occupancy Manager

Start: ☒ Status: Running

Version: 1.1-1
Vendor: CamStreamer

App log

Storeoccupancymanager

Configuration:

Enabled:

Log level:

Server URL:

Activate the license

Axis product serial number: ACCC8ED8CBF0

Select and install license key


Automatic license

License code (optional):

Store Occupancy Manager

Technical guide for system integrators

IX. User interface

 Store Occupancy Manager 1.1.1

CAMERA IMAGE MANAGER

HELP

Enabled

Yes

Displayed on

☐ Camera 1
 ☒ Camera 2
 ☐ Camera 3
 ☐ Camera 4

Quad View

Resolution

1920 x 1080

Store limit

10


Counter access

Counter graphics

Additional graphics overlay settings

Info ticker

Events setup



Save all changes

Cancel

Counter access

Source

AXIS Occupancy Estimator

IP address

192.168.90.63

Port

80

User

root

Password

pass

Schedule

Image overlay will be shown on start times and hidden on end times defined below. Schedule times should be set in the camera's local time - check the Date & Time settings.

No schedule set.

Start

Mon

00:00:00

 End

Mon

23:59:59

OK

Counter graphics

General

Enabled

Yes

Position

Top Left

Offset X

10

Offset Y

10

Scale

100

Picture ENTER

Default

Picture STOP

Default

Fullscreen

No

Schedule

Set day and time

Custom text labels

Max. limit

Max capacity

In store

Currently in

May enter

Can enter

Additional graphics overlay settings

Image 1

None

Image 2

Always

Image 3

Top Left

Image 4

Top Left

Image 5

Top Left

Image 6

Top Left

Visibility

Always

Position

Top Left

Offset X

10

Offset Y

10

Scale

100

Schedule

Set day and time

Events setup

Axis Occupancy Estimator

Event threshold

Info ticker

Enabled

Yes

Show clock

Yes

Clock format

24h

Text color

#000000

Background color

#FFFFFF

Number of lines

1

Switching time

5

Crawl left

No

Text size

40

Source type

Own text

Source

Use Enter to break the line

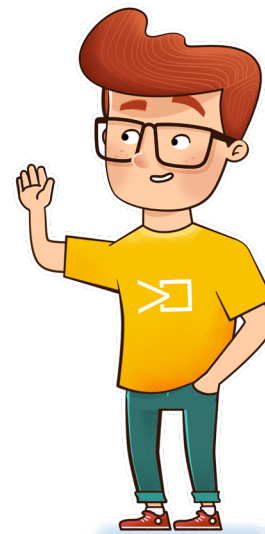
Variables for text: #date, #status, #time, #timestamp

Schedule

Set day and time

Want to know more?

Contact us at
sales@camstreamer.com



TG CS 5501 20 06.EN

9