

Remote Access (Cloud)



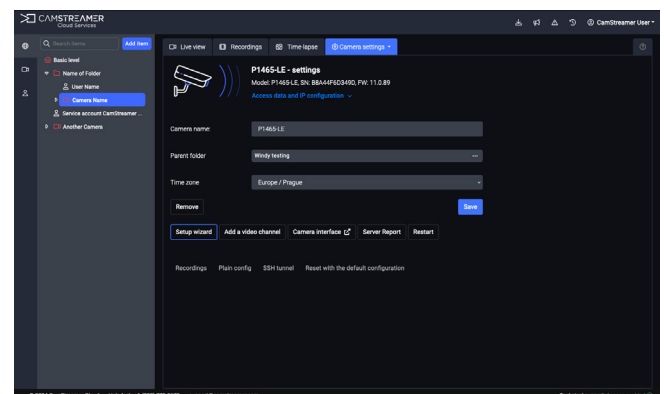
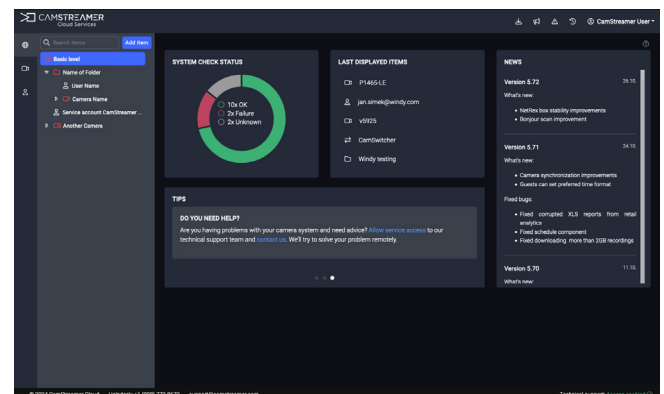
Enter the world of the CamStreamer Cloud and get [remote access](#) to all your cameras in one place. With Remote Access, you can remotely access, manage, and control your Axis camera (no public IP or VPN needed). The service includes dashboards, user roles, camera health watchdog alerts, and possibly access cameras via a mobile app. With CamStreamer Cloud, you can conveniently access any in-camera app.

General

Application type	Cloud service, running on CamStreamer servers with encrypted communication with cameras via in-camera ACAP app, uploaded into the camera (installed by the user-friendly wizard)
Camera compatibility	All Axis cameras (with firmware version 6.50 and higher)
Security and safety	Secure TLS communication between camera, CamStreamer Cloud, browser and mobile app. 24/7 availability of CamStreamer Cloud service. Servers are in multiple geographical locations.
Public IP for camera	Not necessary
API	Yes - see detail at https://camstreamer.com/cloud-api
Free trial	30 days
License	Monthly payment (post-paid)

Service functions

A live view of the camera via browser	Yes
Mobile access to optional additional services such as Recordings, Downloads, Control Panel for CamStreamer App, CamOverlay App, CamSwitcher App	Yes
The number of simultaneous remote accesses to the camera	2
24/7 surveillance of system functionality (watchdog)	Yes
Logging of events	Yes
Secure TLS access	Yes
Event module	Yes
Event notification by e-mail	Yes
Event notification on a smartphone	Yes
Subordinate user accounts	Yes
Access to system features through the application interface (API)	Yes



Remote Access (Cloud)



Examples of watchdog notifications

- Camera connection/disconnection
- Camera restart
- User login
- Configuration change
- Watching live view

<https://camstreamer.com/remote-access>

