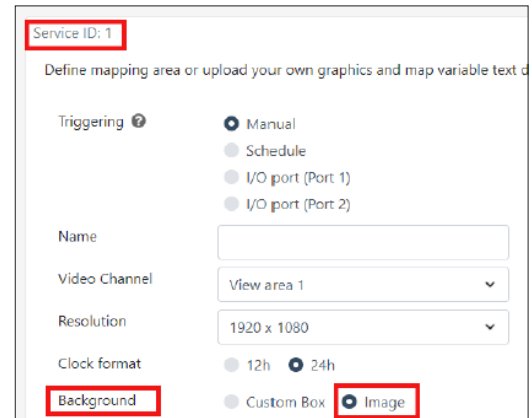


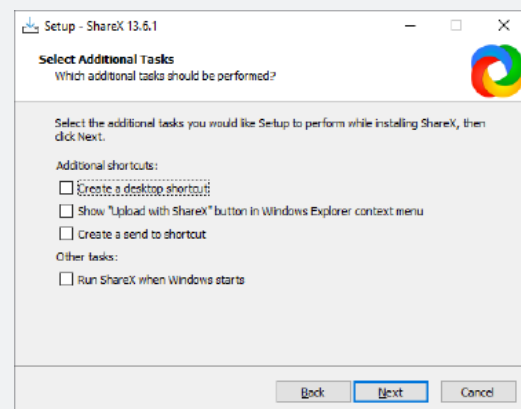
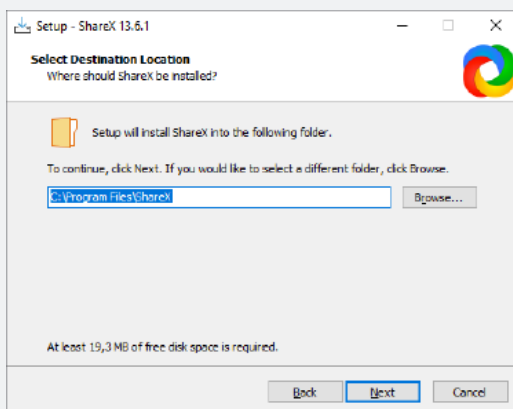
How to setup ShareX for screensharing of POS monitor

1. Install and license the **CamOverlay App** on your Axis camera, download here: camstreamer.com/download-app

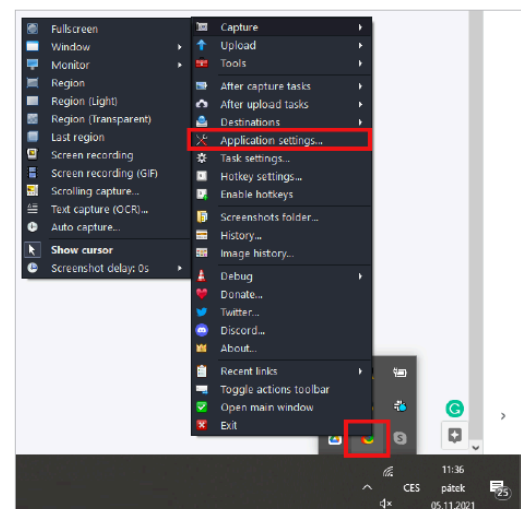
2. In the CamOverlay App add the **Custom Graphics** service and set the **Background** to **Image**



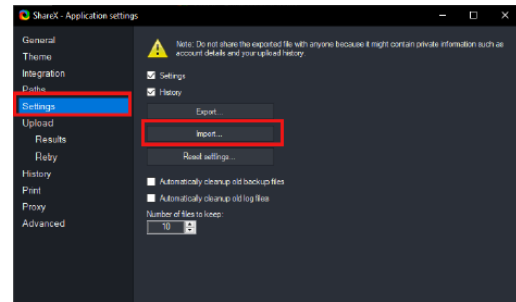
3. Install ShareX **as administrator** on your Windows computer, download link here: getsharex.com/downloads/



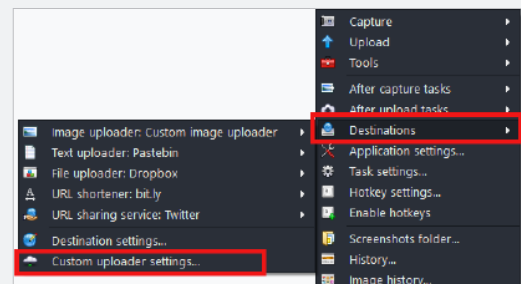
4. After launching the application (not as an administrator, but as the user in whose profile ShareX should run), right-click on its icon in the bottom right panel and select **Application settings**



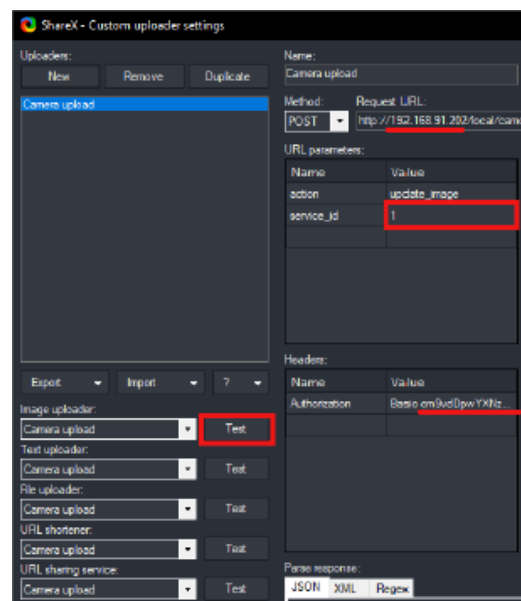
5. In the **Settings** option, import the attached Camera_share.sxb file and close the settings
- [File](#) with 25% scaling (if you are inserting full screen)
 - [File](#) without scaling when inserting a screen cutout



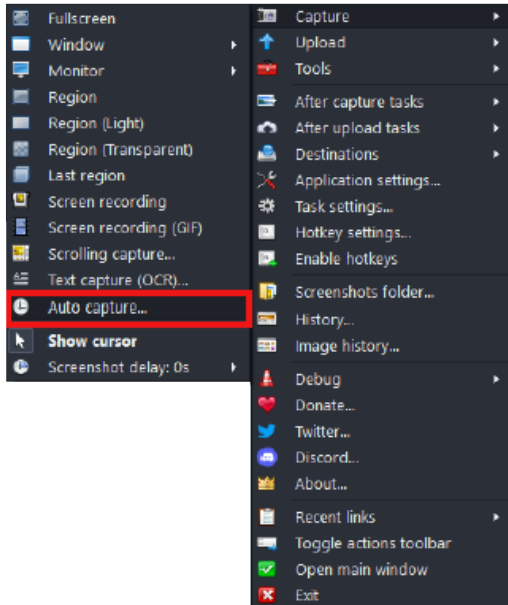
6. In the application settings, open **Destinations > Custom uploader settings**



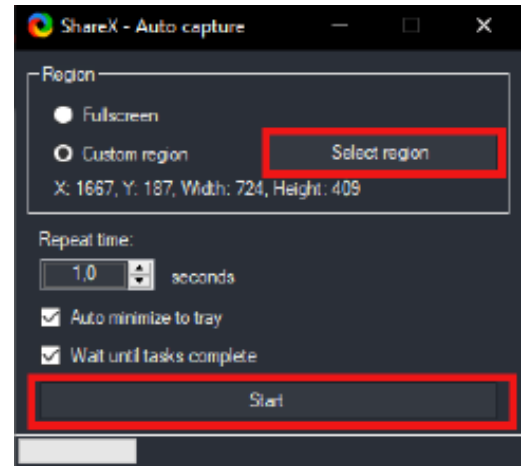
7. In the settings below, overwrite/check:
- the local IP address of the camera to which the screenshot will be uploaded
 - Service ID in the CamOverlay App (marked in the first image in this document)
 - in Headers > Value, leave Basic and after it insert the user and password for the camera in the following format: **user:password** encoded in base64 (via www.base64encode.org/), e.g. **root:pass > cm9vdDpwYXNz**
 - verify the working settings via the „Test“ button, which will load the ShareX icon into the camera image – if everything works close the settings



8. Turn on automatic screen capture see screenshot below



9. Before you start shooting, select the shooting region via the „Select region“ button and press Start



10. Verify in the live camera preview that the screenshots are correctly transferred to the image

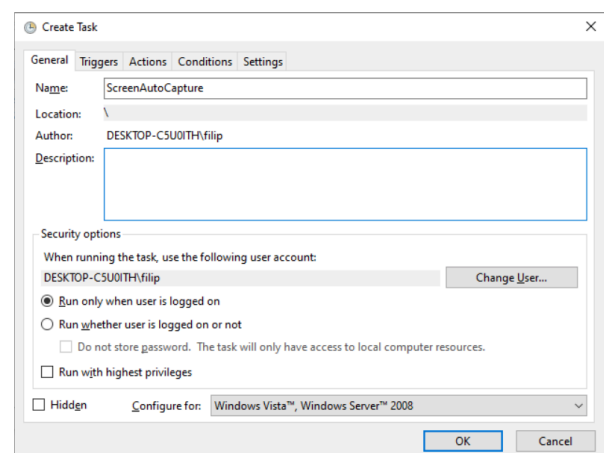
11. If all of the above works, jump out of ShareX via „Exit“ and set your computer to automatically start ShareX when the user logs in, see following screenshots.

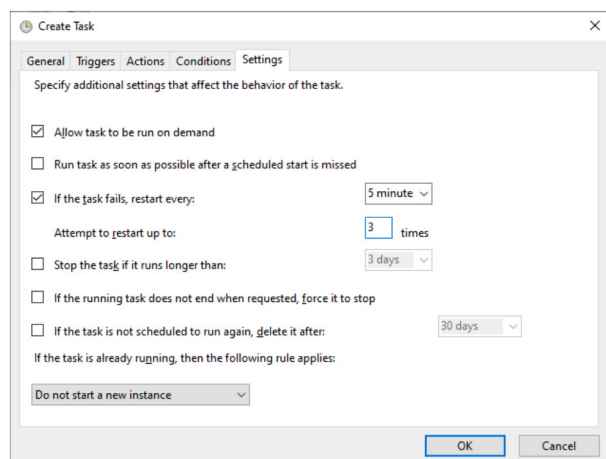
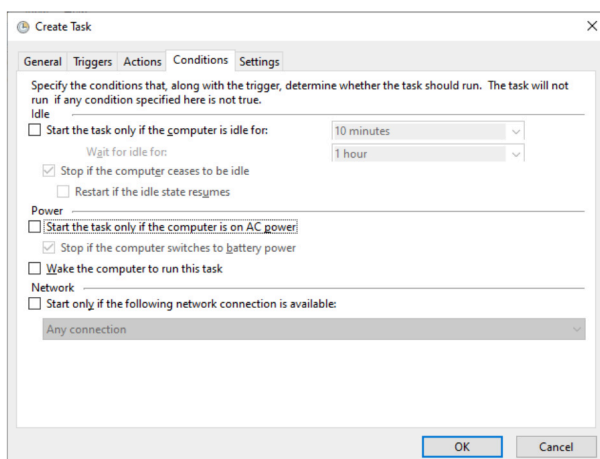
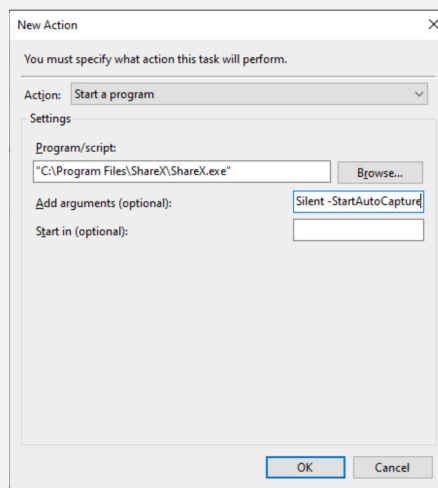
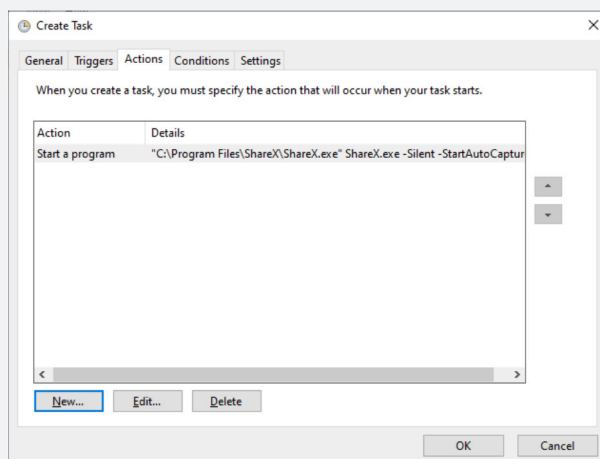
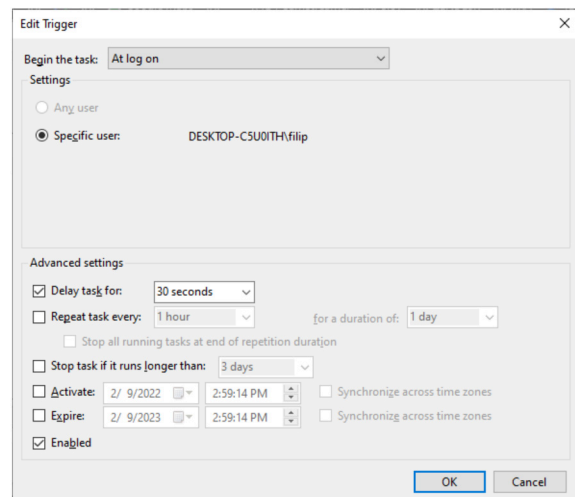
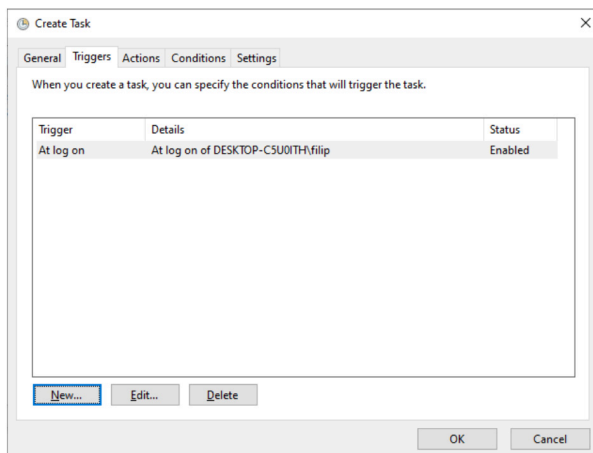
Important:

The task **must be run by the user for whom the screen capture is to work**, and it must be run only for that user (if you run in multiple accounts, it will be sent even from simulated logged-in accounts)

Command syntax for Windows Task Scheduler:

ShareX.exe -Silent -StartAutoCapture





Do not hesitate to
contact us, in case of
any questions!



+1 (908) 772-8672
support@camstreamer.com

